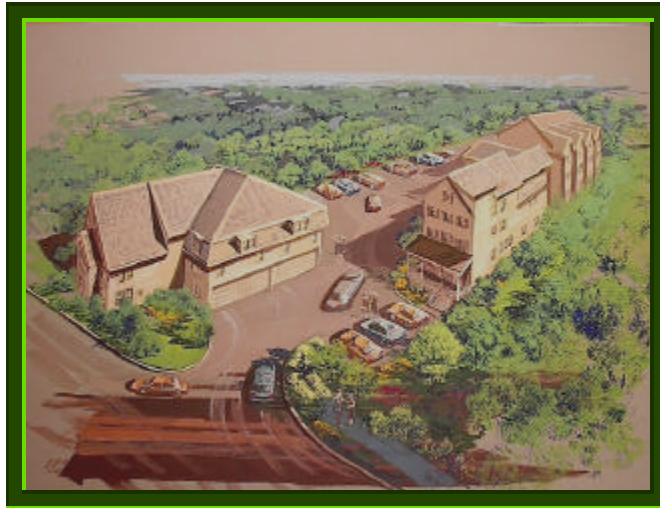


# *The Courtyard at Wilmington Common*



*The Courtyard is a new community of quality crafted townhouses and garden style units that feature top quality construction, inspired architectural design, premium finishes, contemporary open concept floor plans and a great Wilmington location. Just minutes from shopping, dining, recreational opportunities, easy access to all major highways and walking distance to the Boston commuter rail combine to make The Courtyard at Wilmington Common the upscale lifestyle you've been looking for.*



1215 Main Street, Suite 121  
Tewksbury, MA 01876  
Phone: 978-858-3500  
Fax: 978-858-0145

*Model open*

## **Compare Quality and Value**

**The Courtyard at Wilmington Common condominiums is crafted to provide quality, value and years of enjoyable maintenance free ownership. Compare our features with other offerings before you purchase your new home, we think you'll find that our homes offer super quality and value!**

- **Standard Ceramic Tile Flooring in all baths**
- **Standard Stainless Steel Appliances**
- **Standard Brushed Nickel Hardware**
- **Beautiful Quality Wood Cabinetry**
- **Granite Countertops Kitchen & Baths**
- **Standard Crown Molding**
- **Standard Hardwood in Living Room and Kitchen**
- **Standard Hardwood Stairs**
- **Standard finished loft in Townhouses wired for home theater**
- **Surround sound, cable, telephone, and computer access in every room**
- **Standard Central Air**
- **Standard Laundry hookup**
- **Full fire sprinkler protection**
- **Guaranteed Low Condo Fees**
- **Beautifully Landscaped site**
- **Walking distance to commuter rail**
- **A park across the street**
- **Minutes from Rt 93 and 128**
- **Elevator in garden style building**
- **Limited Availability (this is the only new townhouse and garden condo project that is not over 55+ that is available in Wilmington)**

## **About Wilmington**

The town of Wilmington, Massachusetts, is a suburban community with a mix of residential neighborhoods, commercial and industrial parks. The town's reputation a haven of single-family homes, with its close proximity to the interstate, two commuter train lines to Boston and activities aimed at families continues to make Wilmington an attractive place to live and work.

The essence of Wilmington is captured in the spirit of its people. Wilmington is a community that values its children and reveres its seniors. It is a community that welcomes change but respects tradition.

Evidence of the town's community spirit can be found throughout the year at various activities held on the Town Common. The yearly Easter Egg Hunt, Community Craft Fair, Summer Concerts on the common, our weeklong Fourth-of-July Festivities, and the annual Tree-Lighting Ceremony are just some of the events that provide families and friends and opportunity to come together.

### **COMMUNITY INFORMATION**

- **DATE OF INCORPORATION:** September 25, 1730
- **TYPE OF GOVERNMENT:** Open Town Meeting, Town Manager
- **TOTAL AREA:** 17.08 Square Miles
- **COUNTY:** Middlesex
- **POPULATION:** 19,500
- **TOWN SERVICES:** Fully staffed Police and Fire departments.
- **LIBRARY:** One, with approximately 87,000 volumes
- **LOCATION:** Northeastern Massachusetts. Bordered by Andover on the north, North Reading and Reading on the east, Woburn on the south, and Burlington, Billerica and Tewksbury on the west. Located 16 miles from Boston, 11 miles from Lowell.
- **HOSPITALS:** Winchester Hospital Family Medical Center, and several other hospitals within a ten-mile radius.
- **TRANSPORTATION:** Two commuter rails to Boston provided by Massachusetts Bay Transportation Authority. Principal highways servicing the town are Interstate 93 and State Routes 38, 62, 125 and 129. Other major highways easily accessed include US Route 3, Interstate Routs 95 and 495, and State Route 128