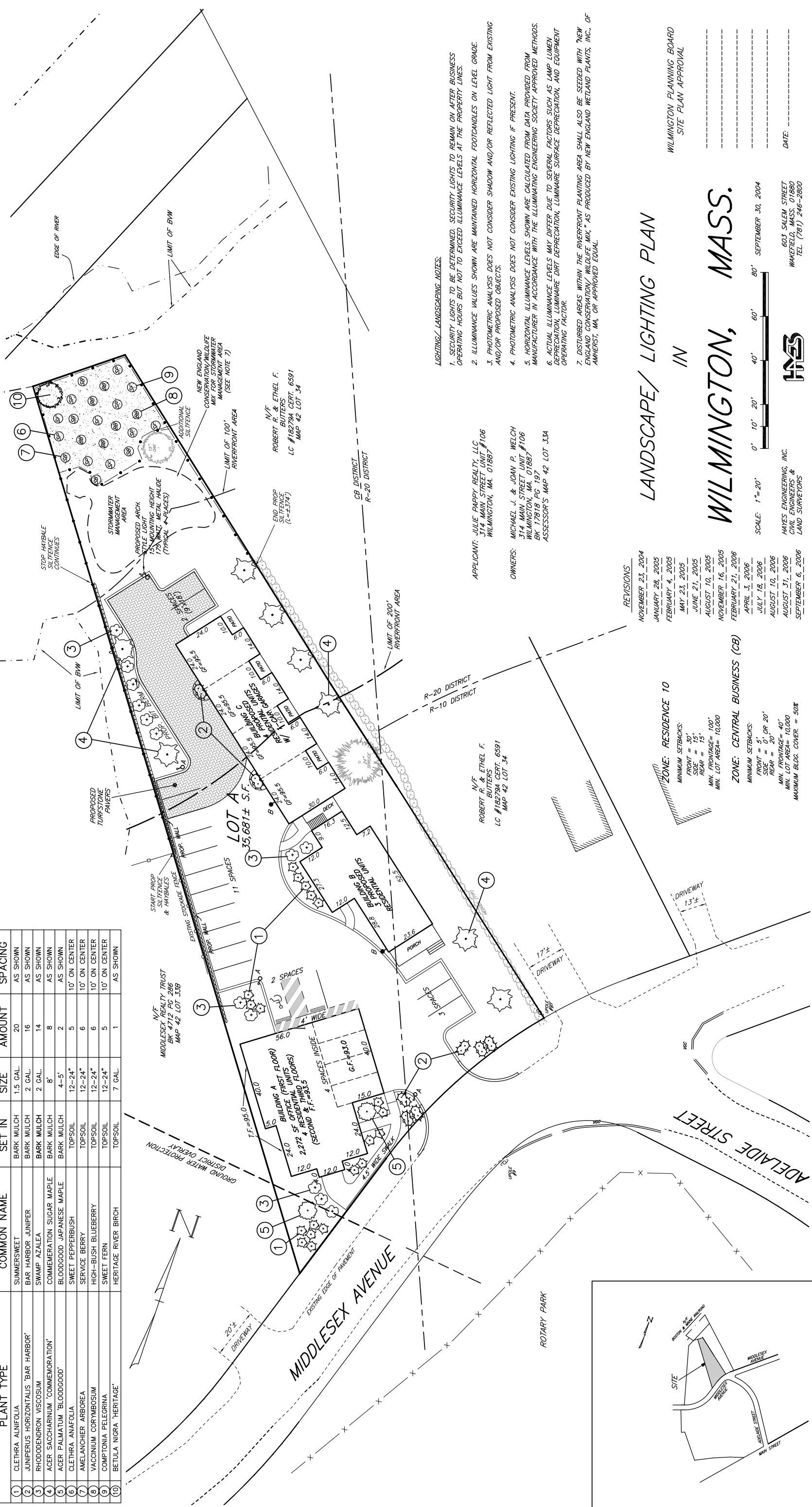


LUMINAIRE SCHEDULE

SYMBOL	LABEL	QTY.	Catalog Number (LSI Lighting)	DESCRIPTION	LAMP	TILT	PHOTOMETRIC FILE	INITIAL LUMENS	LLF
○	A	4	LM-x-x-250P-SMH-H-X-F-F-XXX Greenlee Lighting, Litesyle Series	Single 250 Watt MH Forward Perimeter Area 22' Mounting Ht.	250 Watt Metal Halide Vertical Position	0°	LM-x-250P-SMH-H-F-F-IES (Lamp Details)	25,000	0.80
●	B	2	LS-x-x-100MH-H-X-F-F-XXX Greenlee Lighting, Litesyle Series	Single 100 Watt MH Type II Area 10' Mounting Ht. (Building Mounted)	100 Watt Metal Halide Vertical Position	0°	LS-x-100MH-H-F-F-IES (Lamp Details)	9,000	0.80

PLANTING LEGEND

PLANT TYPE	COMMON NAME	SET IN	SIZE	AMOUNT	SPACING
1	CLETHRA ALNIFOLIA	SUMMERSWEET	BARK MULCH	20	AS SHOWN
2	JUNIPERUS HORIZONTALIS 'BAR HARBOR'	BAR HARBOR JUNIPER	BARK MULCH	16	AS SHOWN
3	RHODODENDRON VICOSUM	SWAMP AZALEA	BARK MULCH	14	AS SHOWN
4	ACER SACCHARINUM 'COMMEMORATION'	ACER SACCHARINUM 'COMMEMORATION'	BARK MULCH	8	AS SHOWN
5	ACER PALMATUM 'BLOODGOOD'	BLOODGOOD JAPANESE MAPLE	BARK MULCH	2	AS SHOWN
6	CLETHRA ANAFOIA	SWEET PEPPERBUSH	TOPSOIL	5	10' ON CENTER
7	AMELANCHIER ARBOREA	SERVICE BERRY	TOPSOIL	6	10' ON CENTER
8	VACCINIUM CORTMBOSUM	HIGH-BUSH BLUEBERRY	TOPSOIL	6	10' ON CENTER
9	COMPTONIA PELEGRINA	SWEET FERN	TOPSOIL	5	10' ON CENTER
10	BETULA NIGRA 'HERITAGE'	HERITAGE RIVER BIRCH	TOPSOIL	1	AS SHOWN



- LIGHTING/LANDSCAPING NOTES:**
- SECURITY LIGHTS TO BE DETERMINED. SECURITY LIGHTS TO REMAIN ON AFTER BUSINESS OPERATING HOURS BUT NOT TO EXCEED ILLUMINANCE LEVELS AT THE PROPERTY LINES.
 - ILLUMINANCE VALUES SHOWN ARE MAINTAINED HORIZONTAL FOOTCANDLES ON LEVEL GRADE. AND/OR PROPOSED OBJECTS.
 - PHOTOMETRIC ANALYSIS DOES NOT CONSIDER SHADOW AND/OR REFLECTED LIGHT FROM EXISTING AND/OR PROPOSED OBJECTS.
 - PHOTOMETRIC ANALYSIS DOES NOT CONSIDER EXISTING LIGHTING IF PRESENT.
 - HORIZONTAL ILLUMINANCE LEVELS SHOWN ARE CALCULATED FROM DATA PROVIDED FROM MANUFACTURER IN ACCORDANCE WITH THE ILLUMINATING ENGINEERING SOCIETY APPROVED METHODS.
 - ACTUAL ILLUMINANCE LEVELS MAY DIFFER DUE TO SEVERAL FACTORS SUCH AS LAMP LUMEN DEPRECIATION, LUMINAIRE DIRT DEPRECIATION, LUMINAIRE SURFACE DEPRECIATION, AND EQUIPMENT OPERATING FACTOR.
 - DISTURBED AREAS WITHIN THE RIVERFRONT PLANTING AREA SHALL ALSO BE SEEDED WITH NEW ENGLAND CONSERVATION/ WILDLIFE MIX, AS PRODUCED BY NEW ENGLAND WETLAND PLANTS, INC., OF AMHERST, MA, OR APPROVED EQUAL.

APPLICANT: JULIE PAPPY REALTY, LLC
314 MAIN STREET UNIT #106
WILMINGTON, MA 01887

OWNERS: MICHAEL J. & JOAN P. WELCH
314 MAIN STREET UNIT #106
WILMINGTON, MA 01887
BK 17818 PG 197
ASSESSOR'S MAP 42 LOT 33A

N/E ROBERT R. & ETHEL F. BUTTERS
LC #18279A CERT. 6591
MAP 42 LOT 34

LANDSCAPE/ LIGHTING PLAN

IN WILMINGTON, MASS.

- REVISIONS**
- NOVEMBER 23, 2004
 - JANUARY 28, 2005
 - FEBRUARY 4, 2005
 - MAY 23, 2005
 - JUNE 21, 2005
 - AUGUST 10, 2005
 - NOVEMBER 16, 2005
 - FEBRUARY 21, 2006
 - APRIL 3, 2006
 - JULY 18, 2006
 - AUGUST 10, 2006
 - AUGUST 31, 2006
 - SEPTEMBER 6, 2006

ZONE: RESIDENCE 10

MINIMUM SETBACKS:
FRONT = 30'
SIDE = 0' OR 20'
REAR = 15'

MIN. FRONTAGE = 100'
MIN. LOT AREA = 10,000

ZONE: CENTRAL BUSINESS (CB)

MINIMUM SETBACKS:
FRONT = 5' OR 20'
SIDE = 0' OR 20'
REAR = 20'

MIN. FRONTAGE = 40'
MIN. LOT AREA = 10,000
MAXIMUM BLDG. COVER. = 50%

WILMINGTON PLANNING BOARD
SITE PLAN APPROVAL

SCALE: 1" = 20'

SEPTEMBER 30, 2004

HAYES ENGINEERING, INC.
CIVIL ENGINEERS &
LAND SURVEYORS
603 SALEM STREET
WAKEFIELD, MASS. 01880
TEL. (781) 246-2800

DATE: _____

